

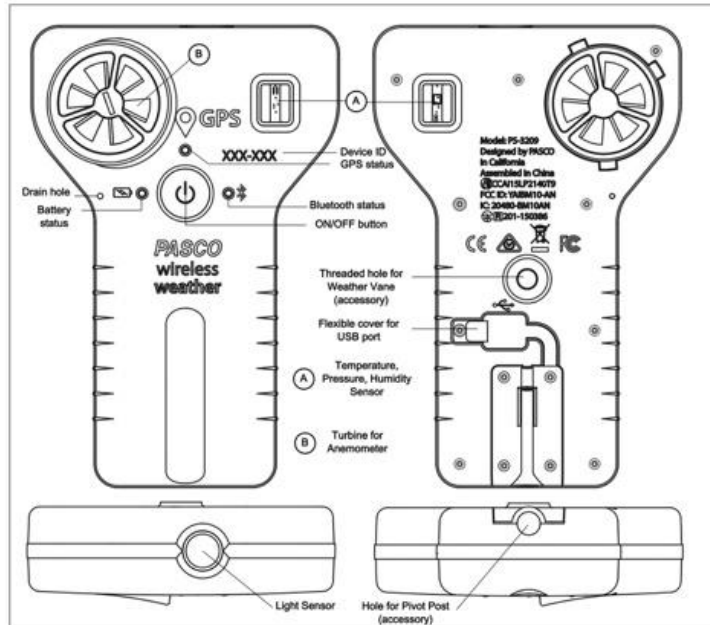
mini-GUIDE

SET UP THE PASCO WEATHER SENSOR WITH CAPSTONE

STEP 1:

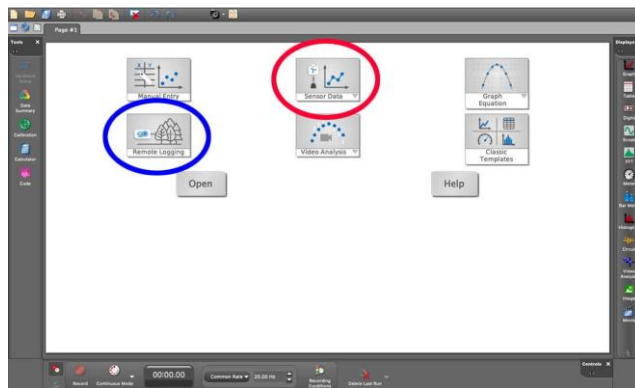
To Turn on the Sensor: press the ON/OFF button.

- All three status LEDs will shine for a short time.
- If the battery is charged, the Battery status LED will stop shining.
- The GPS status and the Bluetooth status LEDs will continue to blink. This indicates that the device is now ready to connect.



To turn **off** the sensor, press and HOLD the ON/OFF button until the Battery status LED shines red momentarily and the other status LEDs stop shining.

STEP 2:



To connect the sensor wirelessly with Capstone software, start the Capstone software on your Macintosh or Windows device, and click the 'Sensor Data' icon.¹

[To use the weather sensor to gather data remotely, while not connected to a laptop or other device, click the 'Remote Logging' icon.]

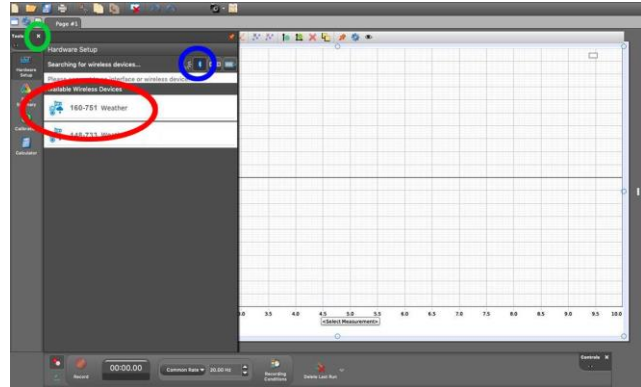
¹ All content comes from <https://www.pasco.com/products/sensors/environmental/ps-3209>
<https://www.pasco.com/products/software/capstone>

mini-GUIDE

STEP 3:

To Open the Wireless Sensor's Window:

The 'hardware setup' window appears, and any sensors available to connect wirelessly to Capstone will appear.



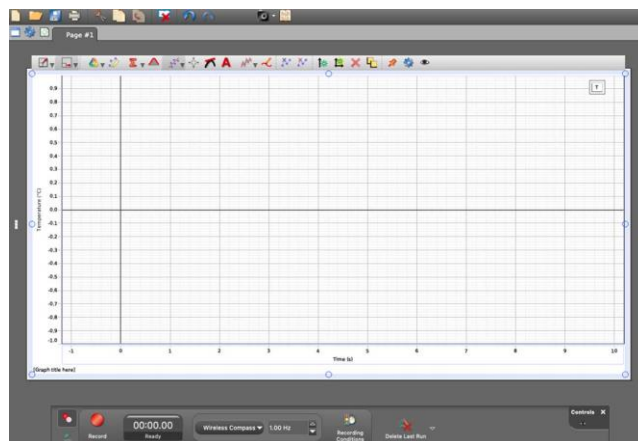
Select the sensor that has **the same 6-digit number** as on the front of the weather sensor. Click the **small x** above to close the sensor selection window.

[If your sensor does not appear, click the small 'Bluetooth' icon and it should appear]

If your class is using more than one sensor, all their ID numbers will appear here. Make sure you select the one you will use to gather data].

STEP 4:

To Start a New Experiment Using the Pasco Weather Sensor



Once you close the sensor-selection window, you will be left with a screen similar to the one above, which means you are ready to begin using the Pasco Weather Sensor to undertake some experiments involving data-gathering.