

mini-GUIDE

USING CAPSTONE SOFTWARE WITH PASCO WEATHER SENSOR TO GATHER ONLY TEMPERATURE DATA (OR ANY OTHER SINGLE MEASUREMENT OF CHOICE)

STEP 1:

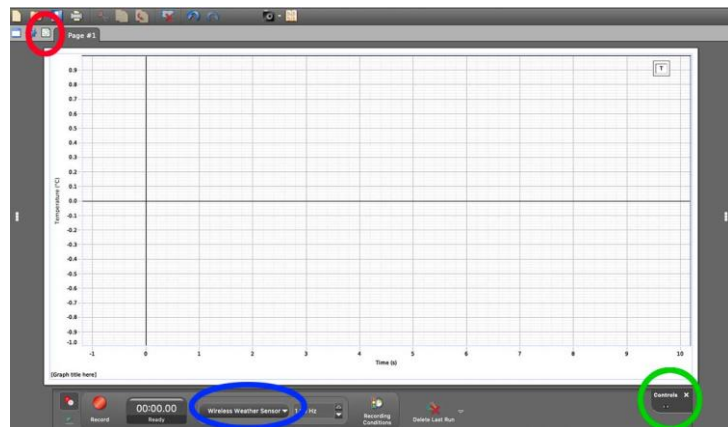
Connect to Pasco Weather Sensor:

See Mini-Guide called “Set Up the Pasco Weather Sensor with Capstone Software” to show you how to connect Capstone software to the Pasco Weather Sensor by Bluetooth. Click ‘Build New Experiment’ as instructed.

STEP 2:

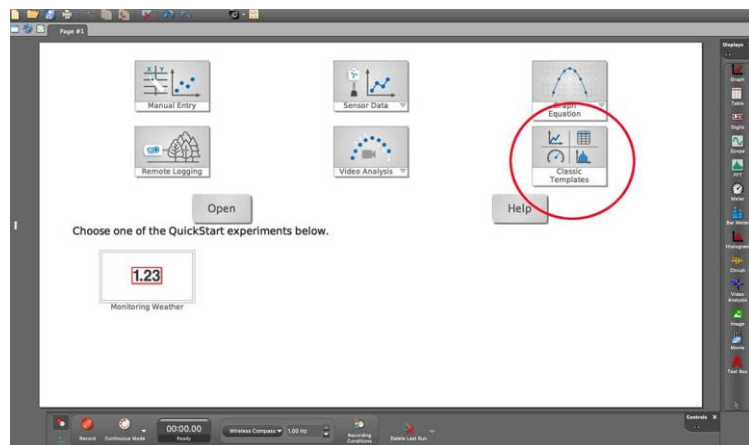
If you followed directions in the ‘Set Up’ mini-guide, you should see the screen shown here.

Click the small ‘Add Page’ button



STEP 3:

Click the ‘Classic Templates’ icon.¹

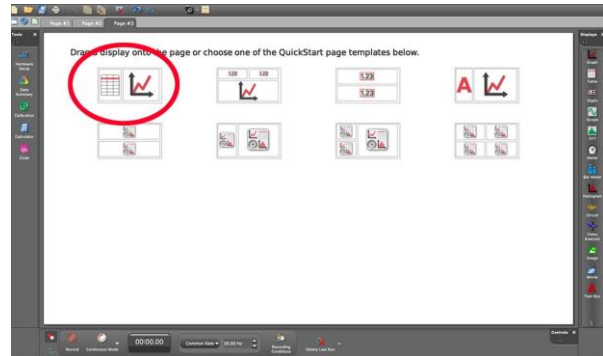


¹ All content comes from <https://www.pasco.com/products/sensors/environmental/ps-3209>
<https://www.pasco.com/products/software/capstone>

mini-GUIDE

STEP 4:

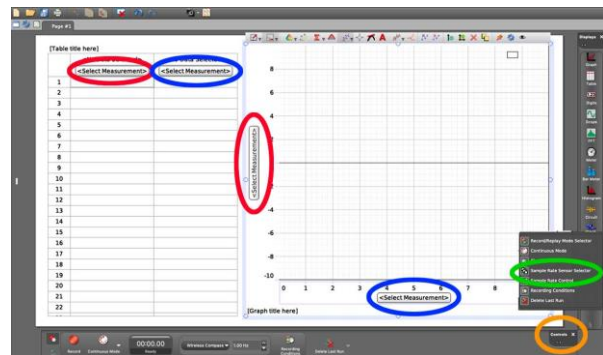
Click the choice that will display a table and a line graph alongside.



STEP 5:

A screen like this will open up. Select 'temperature' for the first table column and for the Y-axis on the graph

Select 'time' for the second table column and for the X-axis on the graph.



Click the 'Controls' button and select 'Sample Rate Sensor Selector' to change the sample rate (a rate of 2hz means 2 samples are taken each second). You can change the sample rate on the lower edge of the screen.

STEP 6:

Click the **Record** button at the lower left corner to begin recording data. The same button becomes the **Stop** button to let you stop data collecting.

