

# mini-GUIDE

## USING PASCO WEATHER SENSOR WITH CAPSTONE SOFTWARE TO PLOT TWO RELATED MEASURES (e.g. TEMPERATURE AND RELATIVE HUMIDITY)

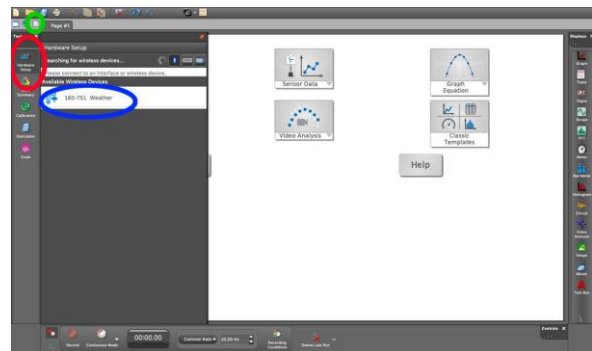
### STEP 1:

#### Connect to Pasco Weather Sensor:

See Mini-Guide called “Set Up the Pasco Weather Sensor with Capstone Software” to show you how to connect Capstone software to the Pasco Weather Sensor by Bluetooth. Click ‘Build New Experiment’ as instructed.

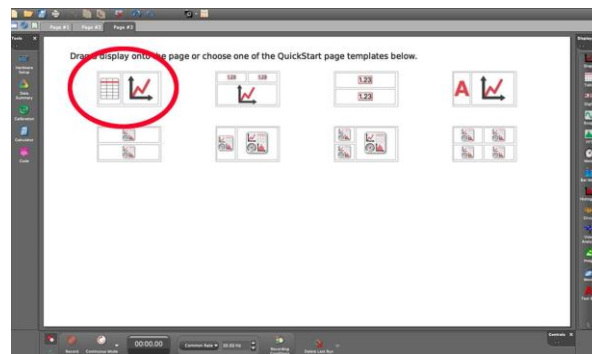
### STEP 2:

As in Mini-Guide 2, once you have used **Hardware Setup** to connect the **Pasco Weather sensor**, click the ‘**Add Page**’ button



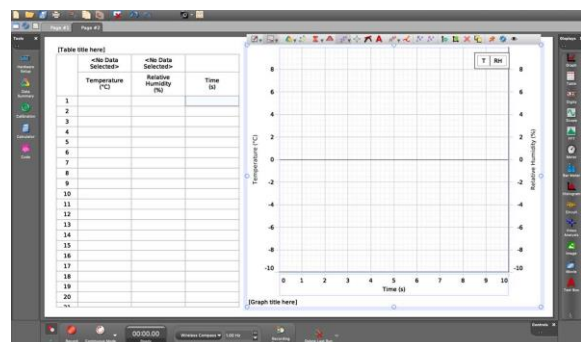
### STEP 2:

Click the ‘**Table and Line Graph**’ icon.



### STEP 5:

The aim is to create a screen display like this, in which a third column is added to the table, and a new Y-Axis is added to the graph. See instructions below to create this display.

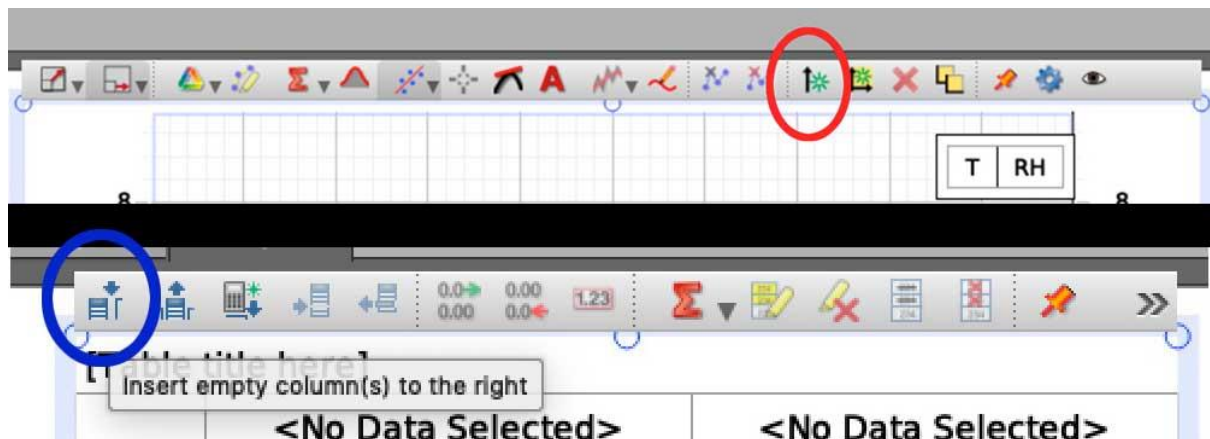


Select temperature, relative humidity and time for the three columns in the table.

# mini-GUIDE

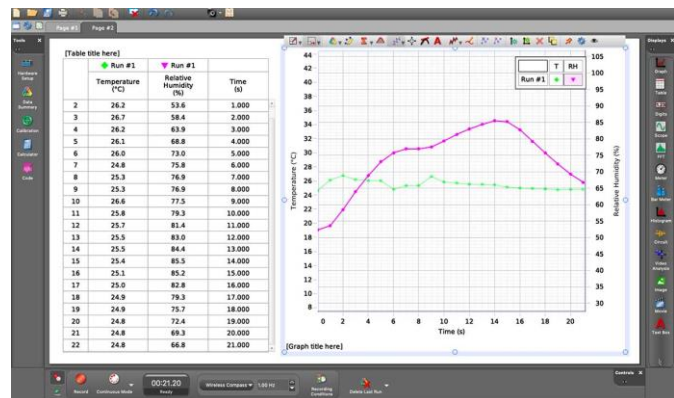
Select temperature and relative humidity for the Y-Axes in the graph, and 'time' for the X-Axis

In order to create the display above, it is necessary to add a new Y-Axis and the third column on the table. To achieve this, place your cursor above the graph and click the 'Add new Y-Axis' button in the toolbar that appears, and then place your cursor over the table and click the 'Insert Empty Column' button (see image below to view the relevant toolbars that will appear).



## STEP 6:

Click the **Record** button at the lower left corner to begin recording data. The same button becomes the **Stop** button to let you stop data collecting.<sup>1</sup>



<sup>1</sup> All content comes from <https://www.pasco.com/products/sensors/environmental/ps-3209>  
<https://www.pasco.com/products/software/capstone>