

mini-GUIDE

Export Data from SPARKvue into Microsoft Excel (or any spreadsheet application)

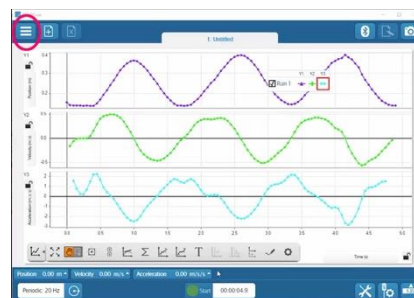
What will this mini-Guide show you how to do?

You will export data from SPARKvue (for example, temperature data recorded using the Pasco Weather Sensor) into Microsoft Excel.

Step 1:

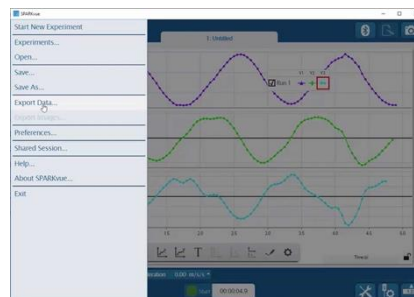
In SPARKvue, open the graphed data from your experiment.

Click on the '3-bar' icon top-left of the screen



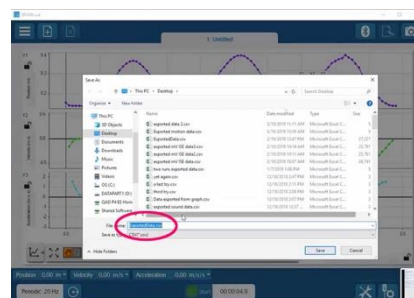
Step 2:

On the drop-down menu that appears, move to "Export Data...". Select .csv file format so that your data can be open in (or inserted into) a spreadsheet application such as Microsoft Excel.



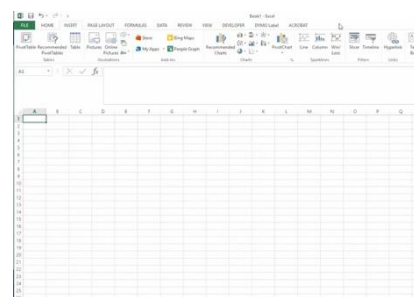
Step 3:

Give your data file a name



Step 4:

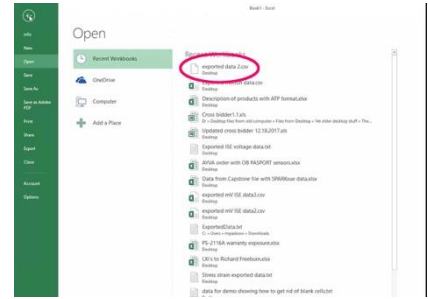
Open Excel and go to 'File' 'Open'



mini-GUIDE

Step 5:

Find the data file you just exported and double-click it.



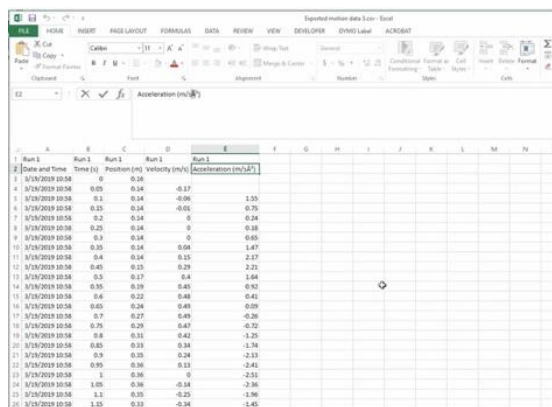
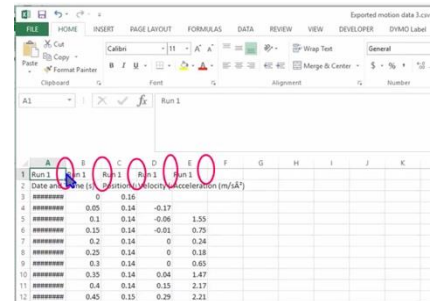
Step 6:

Your data set will appear in the spreadsheet.

[SPARKvue gathers a range of data types, so if you want to see only temperature data in your spreadsheet, you will have to select all the other columns of data and delete them]

Step 7:

If the data does not display properly in the spreadsheet (for example, if some data appears as a set of hashes, as in the image here), then you can double-click the right edge of a column (as highlighted by the red ellipses) to extend each column to a width that properly displays the content)¹



¹ All content comes from <https://www.pasco.com/products/sensors/environmental/ps-3209>
<https://www.pasco.com/products/software/sparkvue>